

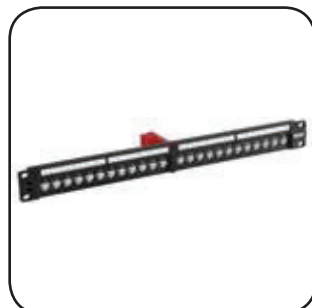


Advanced Physical Layer Management



MIIM G3

The MIIM solution enables complete real-time monitoring of the physical channel between MIIM panels, while supporting easy communication to SNMP based network management tools. MIIM's Device Discovery Toolkit, including Global, Directed and Event-Driven Discovery populate the MAC and IP addresses of discovered devices to the MIIM database, enabling continuous monitoring & mapping the physical layer.



It facilitates work order management, including scheduling and recording of moves, adds and changes (MACs), and enables patch guidance for technicians, with LEDs on the patch panels to indicate ports with pending work orders.

Advanced Physical Layer Management

MIIM™



MIIM Scanner

MIIM scanners monitor activity on a MIIM enabled system. Each 1U scanner can be connected to up to 48 patch panels, providing monitoring of up to 1152 separate physical channels. Standard RJ45 patch cords are used as the data bus connection between scanners and patch panels.

MIIM scanners can be configured and activated independently of the software. When the MIIM application software is connected to the scanner, it “discovers” active hardware and devices on the network and uploads this information onto the MIIM application software. Scanners monitor the connection state of MIIM channels and pass state change data to the MIIM application software. This triggers MIIM’s Event-Driven Discovery function which queries the associate switch and updates the software.

- Event-Driven Discovery enables continuous updating of MIIM with minimal impact to the network
- Simple scanner configuration
- Mission critical port disconnection alerts
- Low power consumption with no fans or cooling required
- Transaction queues record events for later delivery if the scanner is disconnected from the MIIM application
- Data bus connection between the scanner and patch panel is via an industry standard RJ45 patch cord



PowerCat Patch cords Page 23

Order No.	SAP No.	Description
IMS-00100	183240000	MIIM 576 Channel Scanner
IMS-00101	183240008	MIIM 96 Channel Scanner



MIIM G3 Patch Panels

MIIM G3 Patch Panels are used within the MIIM System. Each 1U 24 Port Patch Panel has one data bus connection port located on the rear of the panel which is used to connect the control unit. The control unit connects the panel to the MIIM scanner via a standard RJ45 patch cord. The patch panel is used by the MIIM system to track connectivity in the patch zone. LED status indicators on the control unit show status of connectivity between the panel and the scanner and also the LED indicators on the panel provide panel guidance for work orders. Each panel contains 24 MIIM jacks which can be removed from the panel to be terminated individually with standard punch down tools. MIIM panels function as a standard patch panel when not connected to the MIIM system.

- 24 Ports 1U
- Cat 6 UTP and Cat 6A FTP
- EIA 568A/B wired
- Standard 19” rack mount
- Data bus connection to the MIIM G3 control unit
- Integral cable management shelf ensures bend radius compliance
- International hardware kit contains both ANSI and metric hardware
- Can be terminated using industry standard punch-down tools
- RoHS Compliant
- Intelligent Control unit need to be purchased separately



Solid Cable Assemblies Page 22

Order No.	SAP No.	Description
PID-00283	183200023	1U 24 Port Category 6 UTP MIIM G3 Jack Loaded Patch Panel W/O Control Unit
PID-00285	183210036	1U 24 Port Category 6A Shielded MIIM G3 Jack Loaded Patch Panel W/O Control Unit



MIIM G3 Intelligent Control Unit

The MIIM G3 intelligent control unit enables MIIM Ready G3 panels to sense adds, moves, and changes across all 24 ports on the panel. The control unit contains LED’s to indicator the power supply from scanner. Control unit can be easily added to MIIM ready panels to activate full MIIM capabilities. The control unit contains an RJ45 jack to connect it to the MIIM scanner via a standard patch cord. MIIM Panels with control units that are not connected to a MIIM scanner function the same as a standard patch panel.

- MIIM Control unit provides intelligent management for MIIM G3 panels
- MIIM Control unit is easily added and removed from any MIIM G3 panel
- MIIM Control unit can be mounted on the panel by embedded screw
- MIIM Control unit is powered by the scanner
- Two power status indicators to ensure proper connection of power supply from the scanner
- Control units for fiber & copper panels are different

Order No.	SAP No.	Description
IMD-00005	183240015	MIIM G3 Intelligent control unit for copper panel - Red
IMD-00006	183240016	MIIM G3 Intelligent control unit for fiber panel - Yellow

Advanced Physical Layer Management

MIIM™



MIIM G3 24 Port Duplex LC Fiber Panel

MIIM™ G3 Fiber Optic panels are used within the MIIM System. The adapter interface is 24 duplex LC adapters. Each 1U 24 Port enclosure has one data bus connection port located on the rear of the panel that connects the panel to a MIIM Intelligent control unit. When connected to a MIIM scanner via control unit, the panels detect connection activity on each duplex LC port. The patch panel works as a conventional patch panel when not connected to the MIIM system

- 1U 24 port/48 fiber in LC duplex adapter
- Data bus connection to the MIIM G3 control unit
- Panel options for singlemode and multimode
- Slide out cable management shelf
- Recessed mounting provides adequate space for routing patch cords, even in free standing enclosures with the front door closed
- ANSI and international metric hardware kit provided
- Intelligent Control unit need to be purchased separately
- Using standard LC duplex fiber patch cord to connect MIIM G3 fiber panels

Order No.	SAP No.	Description
RFR-00318	183230013	MIIM G3 48F Duplex LC MM Fiber Patch Panel, W/O control unit
RFR-00319	183230014	MIIM G3 48F Duplex LC SM Fiber Patch Panel, W/O control unit



MIIM Application Software

MIIM Application Software is a client server based Software program and is the central data manager for the MIIM System. It manages OSI Layer 1 assets and provides instantaneous information to the IT Manager regarding connectivity on MIIM enabled channels. The software documents planned and unplanned changes to the network. It allows continuous monitoring of the physical channel between MIIM panels. It automatically monitors all connections/disconnections, updates all MACs to the database, identifies and confirms port availability and notifies the IT Manager of all unscheduled or unauthorized network changes. Event-Driven Discovery gathers device information attached to outlets and is triggered by updates to the scanner. The software allows global network access and cost-effective network management.

- Hierarchal view of entire enterprise layer 1 infrastructure to the port/outlet
- Event monitoring of all connections/disconnections
- Event-Driven Discovery keeps data current and minimizes network bandwidth usage
- Enables guided patching
- Search feature to easily locate assets and information
- Event logs for audit trails
- Layer 1 assets linked to building maps
- Open systems architecture can link with other network management applications
- Suite of management reports available
- Unrestricted number of users per license

Order No.	SAP No.	Description
IMA-00102	183250004	MIIM Server Application License
IMM-00102	183250005	MIIM Server Support/Maintenance
IMA-00101	183250003	MIIM 96 Channel License
IMM-00101	183250002	MIIM 96 Channel License Software Maintenance